

## **MNF-W**

- **Three Key Challenges**
  - **Sustain / Support / Exploit Success (15 MEU backfill with 26 MEU)**
  - **Manage Transition of 1<sup>st</sup> IA Div (now under IGFC Control)**
    - Limit BDE “rotations” to MND-B
    - Retain 3-509 in AO Atlanta through surge period
  - **Training IPs / Managing ERBs**
- **Two Good Ideas**
  - **TT’s – embed and reinforce**
  - **Tribal engagement – encourage / reinforce (SAA)**

# OIF 06-08 TT REQUIREMENTS

## USMC / ARMY

TOTAL COMBINED  
IN AL ANBAR

USMC IN AL ANBAR      USA IN AL ANBAR

MiTT

BTT

NPTT

PTT

TOTALS

22	
9 (7 BTTs, 2 POETTS)	
0	
16*	
47	USMC TTs

9	
0	
0	
20	
29	USA TTs

31	
9	
0	
36	
76	TTs

\* PTT Totals will grow in the coming months

USMC OUTSIDE AL ANBAR

MiTT	0	
BTT	1	(Regional BTT)
NPTT	2	
PTT	0	
TOTAL	3	USMC TTs

USMC TTs in Iraq = 50  
USA TTs in Al Anbar = 29



# Tribal Engagement

## Bottom Line

AO RALEIGH - 2				
ALBU ISSA ✓	REGIONAL INFLUENCE	HIGH		HIGH
* AL JUMAYLI	LOCAL ADVANCEMENT	MODERATE		MODERATE
* MOHEMDI	REGIONAL INFLUENCE	HIGH		HIGH
* ZOBAL				
AO TOPEKA ~ Rawadi				
ALBU SODA	EXPUL INSURGENTS	HIGH		HIGH
* ALBU FAHAD	LOCAL ADVANCEMENT	MODERATE		MODERATE
ABU RISHA	REGIONAL INFLUENCE	HIGH		HIGH
ALBU THIYAB	REGIONAL INFLUENCE	HIGH		HIGH
ALBU ALWAN	REGIONAL INFLUENCE	HIGH		HIGH
ALBU FARAJ	LOCAL ADVANCEMENT	MODERATE		MODERATE
AO DENVER ~ WERN				
ALBU MAHAL ✓	REGIONAL INFLUENCE	HIGH		HIGH
AL SALMAN	LOCAL ADVANCEMENT	HIGH		HIGH
ALBU NIMR	LOCAL ADVANCEMENT	MODERATE		HIGH
* JAGAYEFA	REGIONAL INFLUENCE	MODERATE		MODERATE
UBAYD	REGIONAL INFLUENCE	HIGH		HIGH
* KUBAYSI	ADVANCEMENT	MODERATE		MODERATE



~~SECRET//REL MCFI~~

# AQI POLICE DISTRICTS

## AL ANBAR PROVINCE

06 FEB 2007

~O/H numbers are converted from %s  
\*Includes 2,000 ERB and 500 IHP plus  
up. Not yet approved from MOI.

### Al Qa'im District

Chief: (b)(6)  
IPs: ~1,378 / 1,380 / 2,038  
In Trng: 0  
Stations: 5  
PTTs: 2 USMC / 1 USA

### Emergency Response Battalion

Chief: BGen Obaidi  
ERUs: ~2,192 / 0 / 2,000\*  
In Trng: 496  
PTTs: 2 USA  
O/H is based on # of ERB paid

### Anah District

Chief: (b)(6)  
IPs: 25 / 0 / 177  
In Trng: 14  
Stations: 0  
PTTs: 1 USA

### Haditha District

Chief: (b)(6)  
IPs: ~55 / 202 / 662  
In Trng: 20  
Stations: 1  
PTTs: 2 USMC / 1 USA

### Hit District

Chief: (b)(6)  
IPs: ~672 / 816 / 560  
In Trng: 95  
Stations: 4  
PTTs: 3 USMC

### Rawah District

Chief: (b)(6)  
IPs: ~85 / 111 / 197  
In Trng: 9  
Stations: 1  
PTTs: 1 USMC

### Rutbah District

Chief: (b)(6) (Interim)  
IPs: ~1 / 19 / 285  
In Trng: 0  
Stations: 0  
PTTs: 2 USMC

### Baghdadi District

Chief: (b)(6)  
IPs: ~496 / 515 / 325  
In Trng: 0  
Stations: 2  
PTTs: 1 USMC

### MEF Security Area

Chief: (b)(6)  
IPs: 67 / 67 / 0  
In Trng: 0  
Stations: 1  
PTTs: 0

### Ramadi District

Chief: (b)(6)  
IPs: ~1,416 / 2,693 / 3,639  
In Trng: 743 IP  
Stations: 9  
PTTs: 8 USA

### Fallujah District

Chief: (b)(6)  
IPs: ~1,284 / 2,087 / 1,865  
In Trng: 171  
Stations: 10  
PTTs: 2 USMC / 3 USA

### Habbaniyah District

Chief: (b)(6)  
IPs: ~490 / 363 / 572  
In Trng: 280  
Stations: 3  
PTTs: 1 USMC / 3 USA

### Provincial IP Headquarters

Chief: BGen Obaidi  
IPs: ~55 / 458 / 510  
IHPs: ~549 / 500 / 1,000\*  
In Trng: 83 IP / 16 IHP  
Stations: 2  
PTTs: 2 USMC / 1 USA





**One Team,  
One Mission  
Security for  
the World**

# March 2007

## Augment now

- CF Co per IA Div MITT
- CF PLT per IA Bde MITT
- CF PLT per DBE Bde IT

**Continue close partnership**

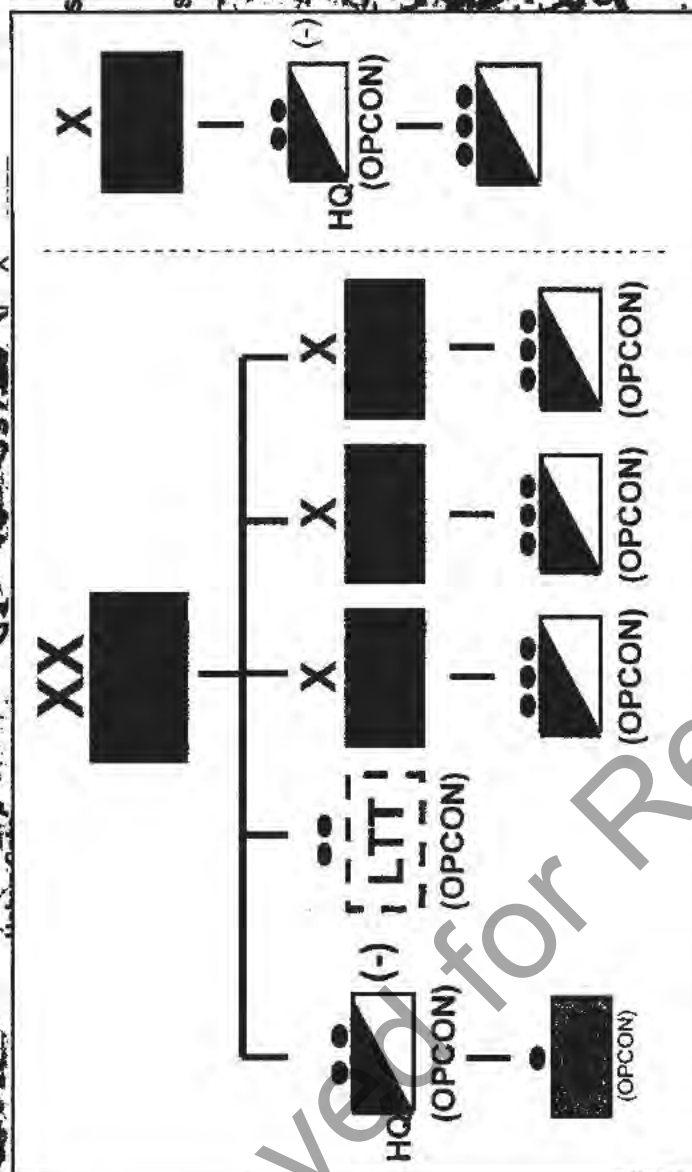
- Consolidate to Kirkuk later

**Augment now**

- CF PLT per MITT
- Stand up SIB transition teams
- Expand MITT coverage

**No change now**

- CF PLT per IA Bn Mitt



## Way Ahead

- **Augment MiTTs w/CF units**
- **More ability to reach 24/7 coverage; increased observation**
- **Inherent C2**
- **Increased logistics, training capability**
- **Increased security**
- **Unit integrity**



DON'T SCAN

# Operation JUSTICE FOR ALL

## • Major Crimes Court (MCC) in Ninewah Province

- Court of general jurisdiction, focused on insurgent cases
- Modeled after CCCI
- Pace of trials is roughly equivalent to CCCI

## • Focus

- Demonstrate terrorists facing consequences to local population and show legitimate Iraqi institutions
- Foster cooperative working relationship among the Governor, the Provincial Iraqi Police, the local judiciary, the provincial detention facility, and the local defense bar in the administration of justice
- Interrupt relationships between the terrorists and local judges, prosecutors, or defense lawyers that undermined the proper administration of justice

Ninewah MCC Panel No. 1



(b)(6)

***Addresses provincial inability/  
unwillingness to try insurgents***

### STATUS:

- 260 cases referred
- 58 defendants tried
- 33 convictions, 25 acquittals  
(10x death, 13x life, 10 other sentences)



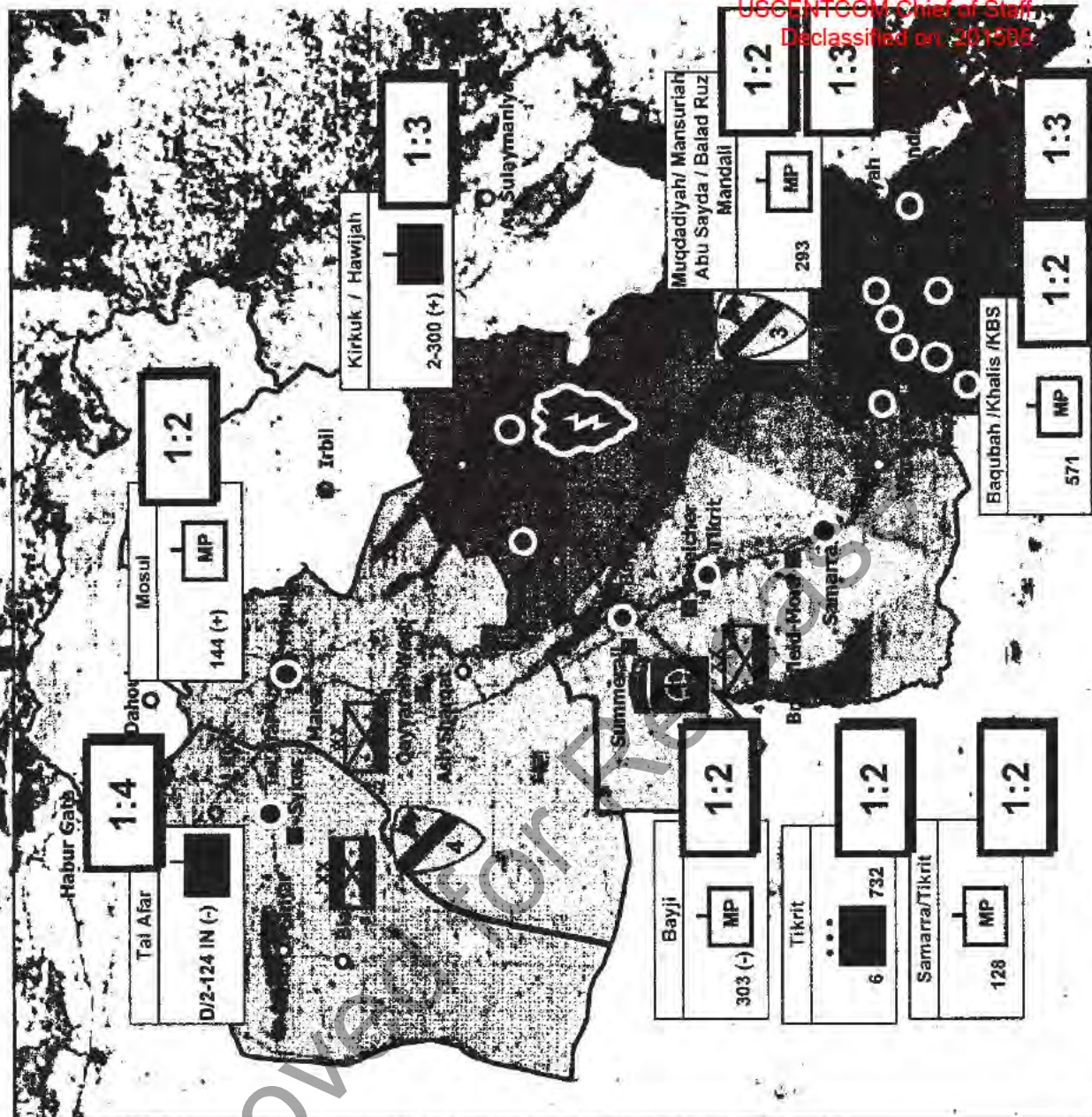


**One Team,**

## One Mission

## Security for Iraq's People

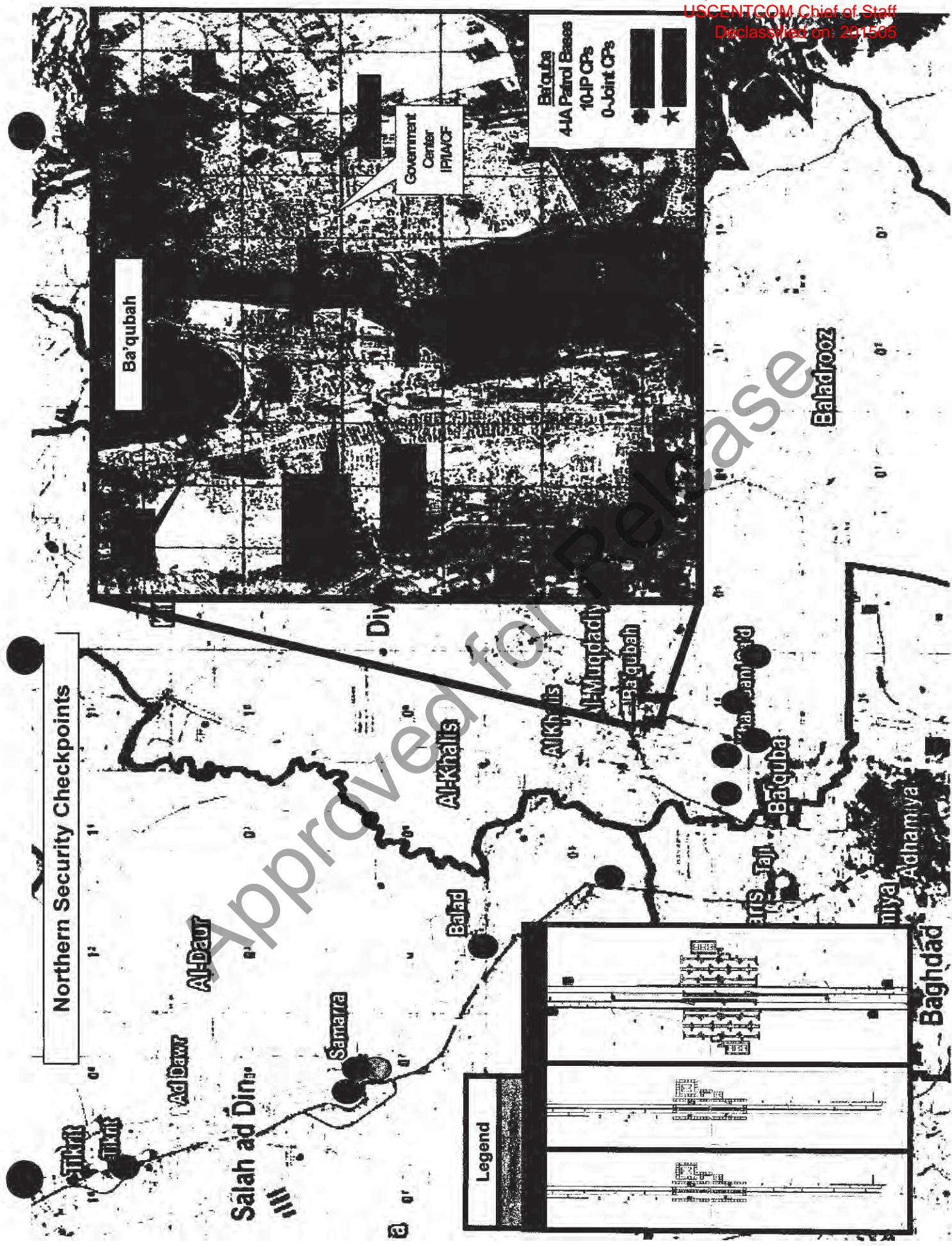
- 97 MP BN-sourced units conduct PTT as organic units TACON to BCTs and consolidated at FOBs
- PTTs continue focus in 5 MNC-I Strategic Cities, and 4 MND-N Key Cities and some Diyala outlying stations
- As security conditions allow, BCTs validate stations & free up PTTs to partner elsewhere IAW MND-N and BCT priorities
- BCTs continue to prioritize un-partnered cities & stations and nominate stations for future PTTs
  - MNC-I Strategic City
  - MND-N Key City
  - Outlying Districts



Declassified by: MG Michael X. Garrett,  
USCENTCOM Chief of Staff  
Declassified on: 201305

~~SECRET//REL TO USA: MCFW//201701016~~





Don't Scan